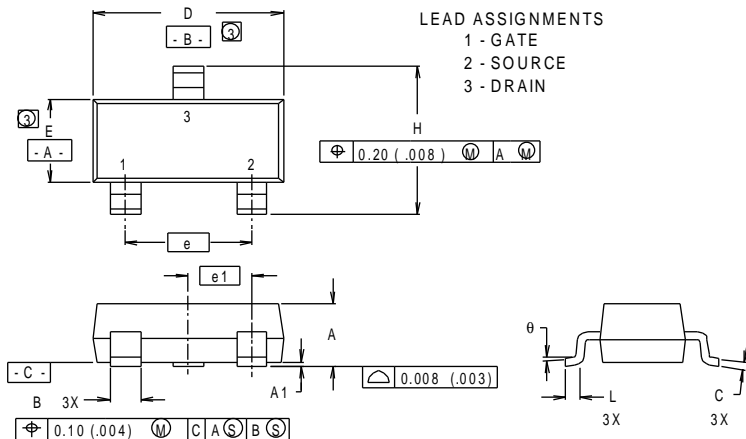


# Package Outline

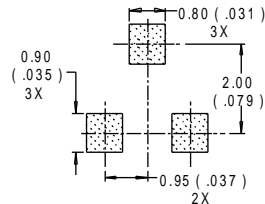
## HEXFET MICRO3 (SOT-23) Outline

Dimensions are shown in millimeters (inches)



DIM	INCHES		MILLIMETERS	
	MIN	MAX	MIN	MAX
A	.032	.044	0.82	1.11
A1	.001	.004	0.02	0.10
B	.015	.021	0.38	0.54
C	.004	.006	0.10	0.15
D	.105	.120	2.67	3.05
e	.0750 BASIC		1.90 BASIC	
e1	.0375 BASIC		0.95 BASIC	
E	.047	.055	1.20	1.40
H	.083	.098	2.10	2.50
L	.005	.010	0.13	0.25
$\theta$	0°	8°	0°	8°

### MINIMUM RECOMMENDED FOOTPRINT



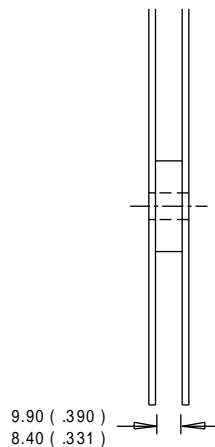
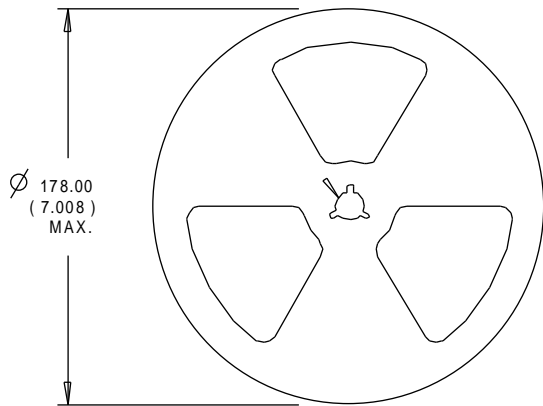
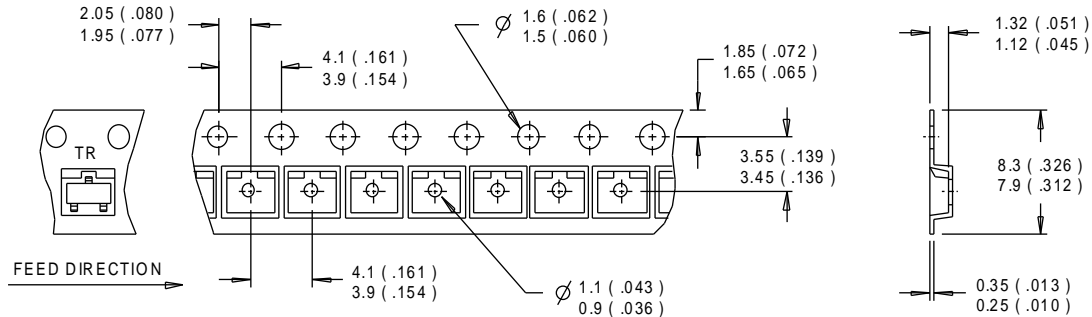
#### NOTES:

1. DIMENSIONING & TOLERANCING PER ANSI Y14.5M-1982.
2. CONTROLLING DIMENSION : INCH.
- ③ DIMENSIONS DO NOT INCLUDE MOLD FLASH.

# Tape & Reel Information

## HEXFET MICRO3 (SOT-23)

Dimensions are shown in millimeters (inches)



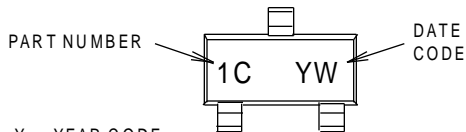
### NOTES:

1. CONTROLLING DIMENSION : MILLIMETER.
2. OUTLINE CONFORMS TO EIA-481 & EIA-541.

# Part Marking Information

## HEXFET MICRO3 (SOT-23)

EXAMPLE : THIS IS AN IRLML6302



Y = YEAR CODE  
W = WEEK CODE

TOP

PART NUMBER EXAMPLES:

1A = IRLML2402  
1B = IRLML2803  
1C = IRLML6302  
1D = IRLML5103

DATE CODE EXAMPLES:

YW W = 9503 = 5C  
YW W = 9532 = EF

YEAR	Y	WORK WEEK	W
2001	1	01	A
2002	2	02	B
2003	3	03	C
1994	4	04	D
1995	5		
1996	6		
1997	7		
1998	8		
1999	9		
2000	0	24	X
		25	Y
		26	Z

YEAR	Y	WORK WEEK	W
2001	A	27	A
2002	B	28	B
2003	C	29	C
1994	D	30	D
1995	E		
1996	F		
1997	G		
1998	H		
1999	J		
2000	K	50	X
		51	Y
		52	Z

WORK WEEK = (1-26) IF PRECEDED BY LAST DIGIT OF CALENDER YEAR  
WORK WEEK = ( 27-52) IF PRECEDED BY LETTER